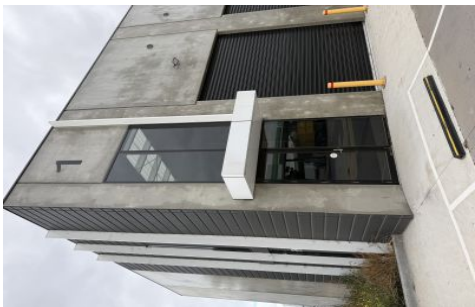


J A S



1/411 Grieve Parade Altona North VIC

Be the first to occupy this brand-new commercial space, perfectly positioned for maximum visibility with approximately 28,000 passing vehicles per day. Situated on Grieve Parade, designated as one of Melbourne's main industrial roadways within Melbourne's Principal Freight Network (PFN).

Prime Features:

- Brand New Build - Never before occupied
- Secure Garage Door for added safety
- Convenient On-Site Parking - Includes a space in front
- Mezzanine Office - Ideal for administrative use
- Fully Equipped Kitchenette - Downstairs convenience
- On-Site Toilet - Ground level accessibility
- 96m floor area plus 32m2 mezzanine area (approx)

High-Exposure Location - A prime opportunity to establish

Price : \$28,000 Per Annum Plus GST Plus Outgoings

View : <https://www.jasstephens.com.au/8620918>



Chris Worthy
0456809247