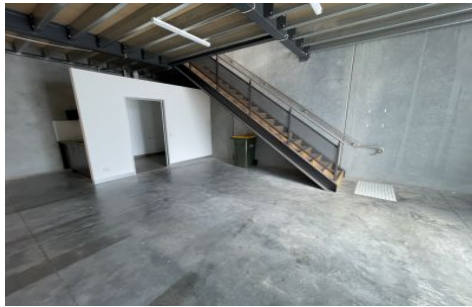


JAS



7/15 Earsdon Street Yarraville VIC

2 🚗

This is your opportunity to secure a 163 sqm (approx) modern warehouse premises in an unbeatable prime location of Yarraville with close access to the Princes Freeway (M1), Westgate Freeway (M1) and Western Ring Road (M80). Perfectly suited for all warehouse/trade headquarters, and businesses that need separate warehousing, office or workshop space. Encompassing a large full use warehouse with 7.5m ceilings, upstairs office and container high lift roller door. Perfectly suited for an electrician, plumber, carpenter, builder, small showroom, events and creative businesses just to name a few (STCA).

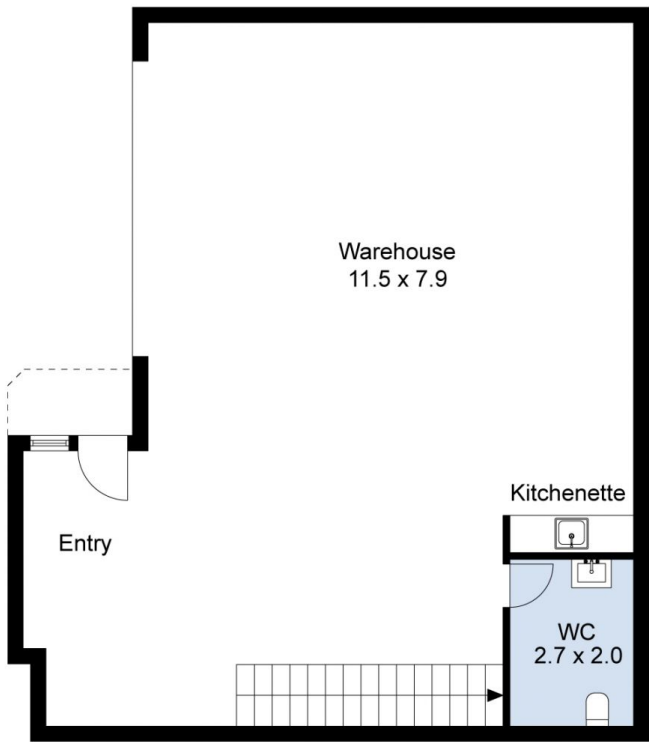
Price : Contact Agent
Building Size : 163 sqm
Land Size : 163 sqm
View : <https://www.jasstephens.com.au/8309212>

Property Features Include:

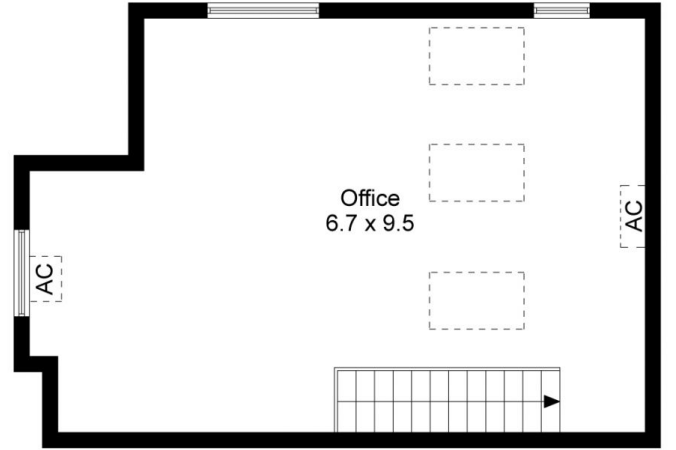
- Zoned industrial 1
- Electric, high lift container height roller door
- Two-level 163 sqm property (approx)



Chris Worthy
0456809247



Ground Floor



1st Floor

Total Internal Measurement 156 Sqm.

Measurements are indicative and in meters. Exterior elements are not in exact position.
Interested parties should confirm details at their own discretion

