

JAS



3-9 Wingfield Street Footscray VIC



All set and ready for your organisation's occupation....

Great location: In proximity of the trendy and vibing café/bar precinct of Footscray and short stroll to the Maribyrnong river walkway. A 5 minute* walk to central Footscray Market Place, Train Station and number 82 tram.

Property In Summary and Ideas (STCA):

- Solid brick building with two street frontage and A/C split systems in all offices, area 478m²* approx.
- Short 5 minute walk to Footscray Station, Restaurants and Markets
- 4km* to Melbourne CBD
- Maribyrnong river almost on your doorstep
- Two street frontages with plenty of long term on-street

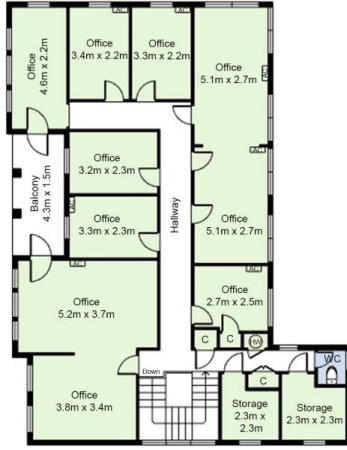
Price : Contact Agent
Building Size : 478 sqm
Land Size : 708 sqm
View : <https://www.jasstephens.com.au/8230497>



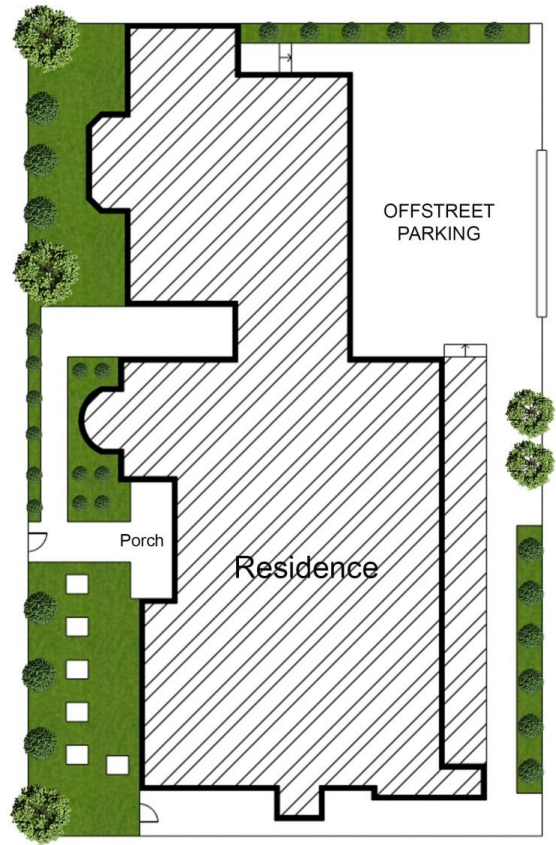
Chris Worthy
0456809247



Ground Floor



First Floor



Site Plan

