

JAS



811B Ballarat Road Deer Park VIC

A blank canvas awaits and is ready for your own fit out to suit. In proximity of the trendy and vibing restaurant, café/bar precinct of Deer Park and busy Ballarat road frontage with service road access. A short walk to Deer Park Train Station with access to bus transport network. This space is only limited by your imagination.

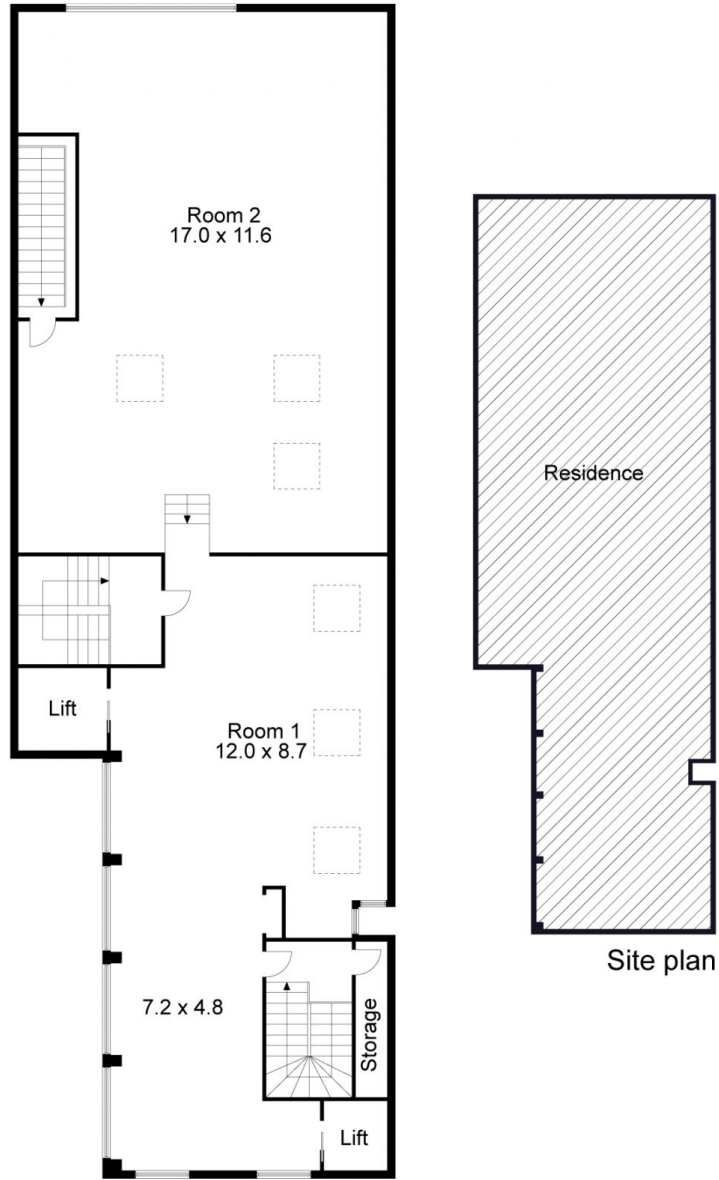
Perfectly suited to (stca):

- Professional Offices
- Education/RTO
- Medical Consulting Suites
- Allied Health
- 24 Hr Gym/yoga/pilates
- Creative Space/Learning hub
- The possibilities are endless

Price : Contact Agent
Building Size : 382 sqm
Land Size : 382 sqm
View : <https://www.jasstephens.com.au/8213996>



Chris Worthy
0456809247



Total Internal Measurement 382 Sqm.

Measurements are indicative and in meters. Exterior elements are not in exact position.
Interested parties should confirm details at their own discretion

