

# JAS



## Unit 6/25 Robbins Circuit Williamstown North VIC

This is your opportunity to secure a 119 sqm (approx) modern 2 level warehouse, with upstairs office in this unbeatable prime location in North Williamstown. Located in the newly established commercial precinct of North Williamstown, this property also provides close access to the Westgate Bridge, Docklands Boulevard, or Melbourne Airport via the freeway. Perfectly suited for all warehouse / tradesmen centre headquarters for an electrician, plumber, carpenter, builder or even a small showroom. The warehouse could also be used for e-commerce, creative arts, professional services, light manufacturing, or consumer goods (STCA). The property is ready to inspect and move straight on in - all completed and ready for your business to thrive!

**Building Size** : 119 sqm  
**Land Size** : 130 sqm  
**View** : <https://www.jasstephens.com.au/8206175>



**Chris Worthy**  
0456809247

Property Features Include:

# Unit 8

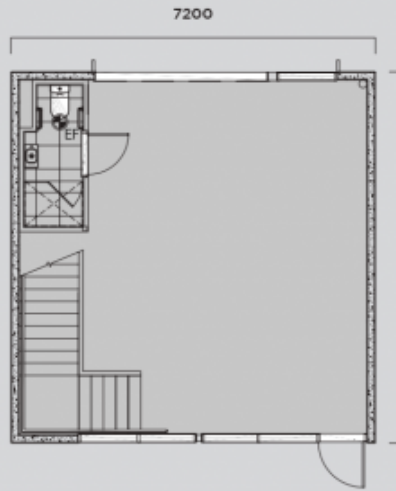
## FLOOR PLAN

Ground floor • 54 sqm

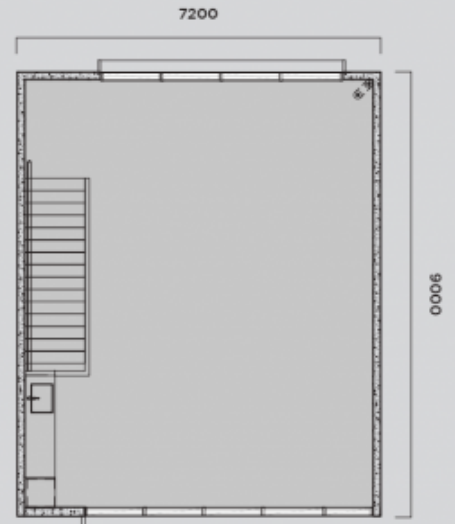
First floor • 65 sqm

Total • 119 sqm

Car spaces • 1



Ground Floor



First Floor