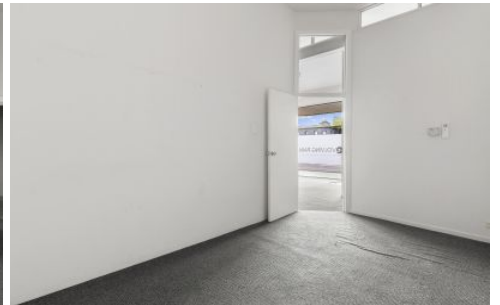


JAS



1/29 Hope Street Spotswood VIC

This clean & modern blank canvas awaits your reality. Superb medical, psychology, allied professional, beautician, or office space opportunity with prominent exposure to road and foot traffic. The property is situated on busy Hudson's Rd, Spotswood and across the street to the Train Station. This Commercial property is right amongst the many vibrant cafes, and shops that Spotswood has to offer.

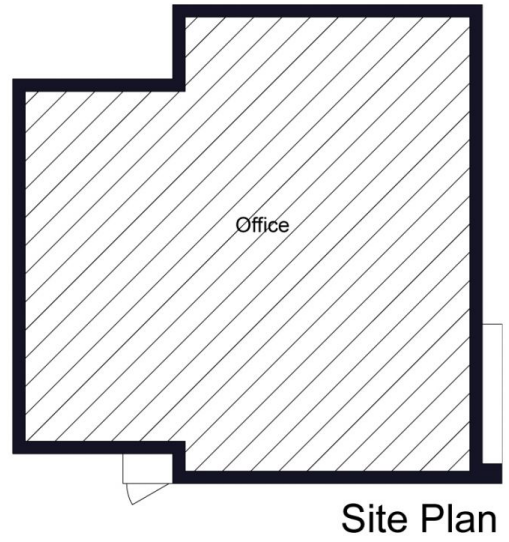
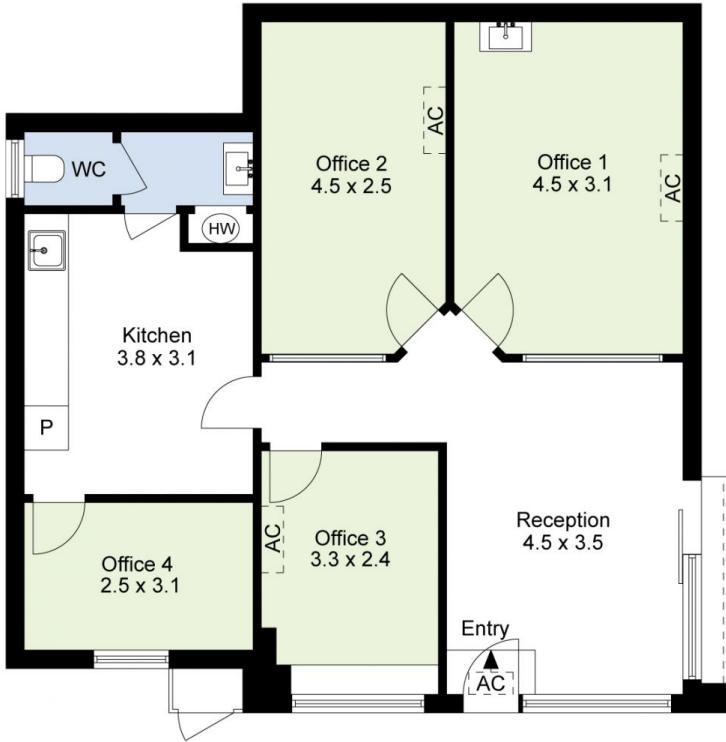
This property includes:

- Vacant commercial freehold of 75 sqm approx.
- Excellent high exposure road signage potential
- Designated reception area with 3 individual specialty treatment rooms
- Plenty of doorstep on street parking
- Favourable Commercial Zone 1

Building Size : 75 sqm
Land Size : 75 sqm
View : <https://www.jasstephens.com.au/820470>
0



Chris Worthy
0456809247



Total Internal Measurement 75 Sqm.

Measurements are indicative and in meters. Exterior elements are not in exact position.
Interested parties should confirm details at their own discretion

