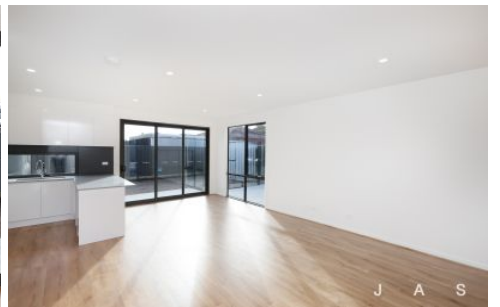
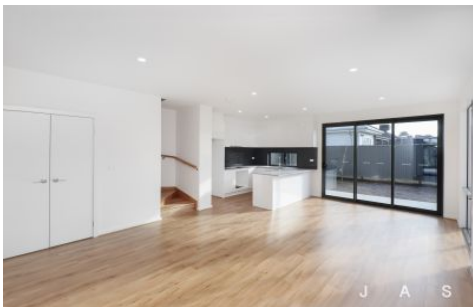


# J A S



## 3/26 Wyalong Street Albion VIC

4 🛏 3 🚿 3 🚗

Set amongst the quiet tree lined suburban streets of Albion this newly constructed home is packed full of features and finished to the highest standard.

Located perfectly with Albion and St Theresa's Primary Schools, Selwyn Park and Playground, Sunshine Market Place and Albion Train Station all very close by.

The townhouse comprises of;

- Four great sized bedrooms including two masters with ensuite bathrooms and walk in robes. One upstairs and one downstairs
- Open plan living, dining and kitchen
- Stunning kitchen features Bosch appliances with gas cooking and a dishwasher
- Living open onto the neat rear courtyard complete with storage shed and rainwater tank
- Remote single garage with additional off street space

**View :** <https://www.jasstephens.com.au/8108640>



**Caitlyn Colquhoun**  
**0456762068**

3/26 Wyalong Street,  
Albion, VIC, 3020



Whilst every attempt has been made to ensure the accuracy of this floorplan, measurements of doors, windows, rooms and any other items are approximates only. The producer or agent cannot be held responsible for any errors, omissions or misstatements. This plan is for illustrative purposes only and should be used as such.