

J A S



34 Eleanor Street Footscray VIC

1 

This period style home set up as a going concern commercial enterprise lends itself ideally as consulting rooms and specialist medical hub. Located opposite Footscray Hospital it is ideally situated for a doctor or surgeon wanting a practice offsite. With ample front door on street parking, along with public transport bus access, this property is easily accessible and perfectly located

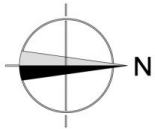
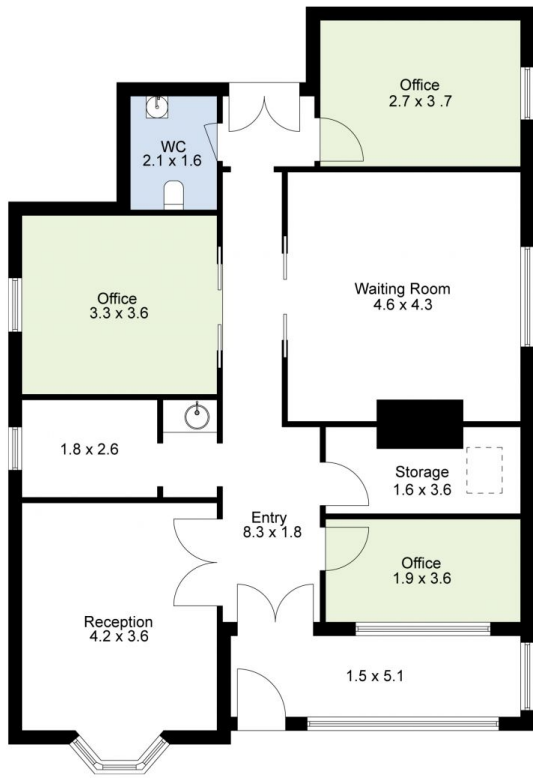
Price : Contact Agent
Building Size : 108 sqm
View : <https://www.jasstephens.com.au/7837240>

Some ideas for the building but not limited to may include (STCA)

1. GP Rooms
2. Specialist or general Surgeon practise
3. Dentist
4. Wellness Hub
5. Physiotherapy/Chiropractor/Osteopath
6. Psychologist/Counselling

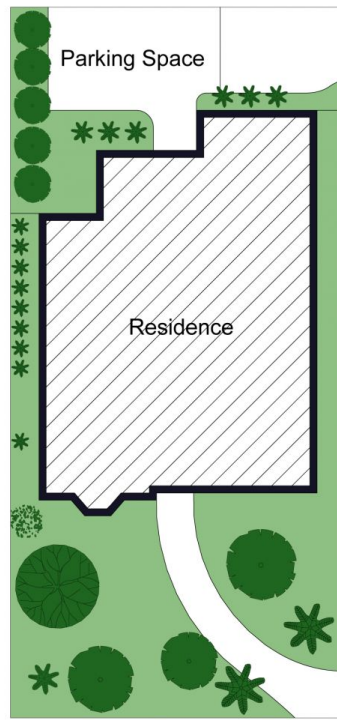


Chris Worthy
0456809247



Total Internal Measurement 108 Sqm.

Measurements are indicative and in meters. Exterior elements are not in exact position.
Interested parties should confirm details at their own discretion



Site Plan

Produced by **DIAKRIT**