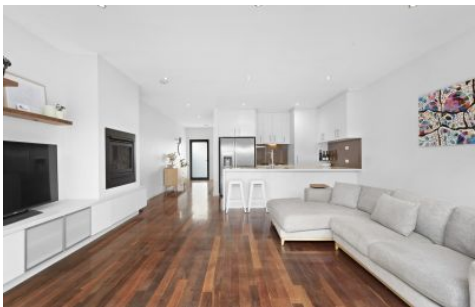





JAS



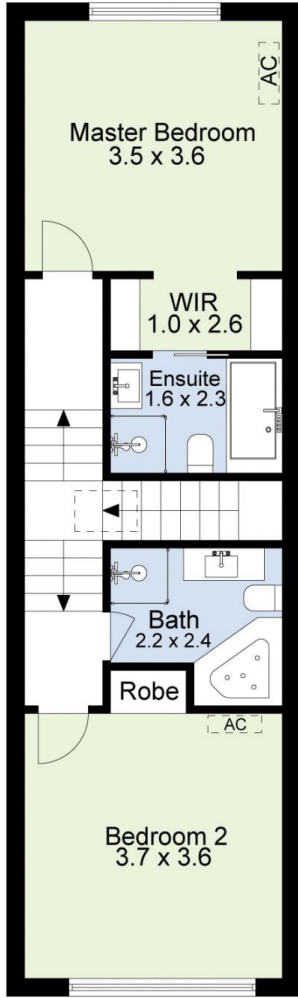
1/364 Williamstown Road Yarraville VIC

2  2  2 

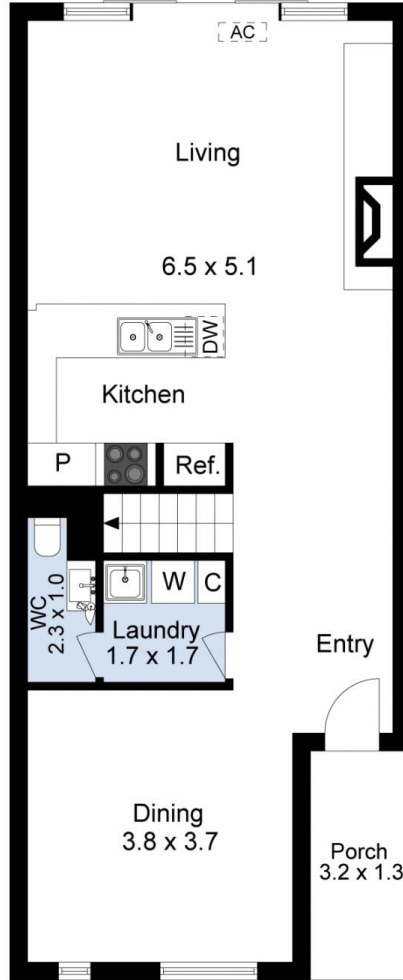
This stunning double-storey townhouse offers:

- Two bedrooms include a spacious master with a walk-through robe and large ensuite
- Formal dining room with double-glazed windows + open-plan kitchen/living with well-appointed modern kitchen and feature fireplace
- Split-system heating and cooling in both bedrooms and living area
- Large paved entertaining patio + secure off-street parking for two cars via rear ROW
- Conveniently positioned just 9.5km* from the CBD in a sought-after pocket of Yarraville, within strolling distance of cafes, parks, playgrounds and Yarraville Village
- Sought-after school zone - Wembley Primary School (12-minute* walk) and Footscray High School's Pilgrim campus.

View : <https://www.jasstephens.com.au/7315562>



1st Floor



Ground Floor



Site Plan

Total Internal Measurement 129 Sqm.

Measurements are indicative and in meters. Exterior elements are not in exact position.
Interested parties should confirm details at their own discretion

